



LIFE14 ENV/IT/000414
Demonstrating Remote Sensing integration in sustainable forest management
FRESH LIFE

ACTION C1
Local monitoring

Deliverable
Final local monitoring

Firenze,
30/11/2019

| | |
|--|----------|
| 1. Aims | 1 |
| 2. Milestones e deliverables | 1 |
| 3. Progress | 1 |
| Frequency of meetings and field visits with local stakeholders | 1 |
| % of scheduled deliverables and milestones | 2 |
| % incremented area with Sustainable Forest Management (SFM) in each study area | 2 |
| Number of SFM indicators calculated in each study area | 3 |

1. Aims

The aim of the action is to acquire information for quantitatively estimating the impact of the project actions in terms of the incremented sustainability of forest management in the study areas and, at the same time, to maintain the project activities in the different local sites on track respecting deadlines and deliverables.

The action is under responsibility of the coordinating beneficiary that acquire information from the responsible beneficiaries in the three demonstration sites also through the compilation of questionnaires, meetings and field visits.

2. Milestones e deliverables

In the Action C1, the following milestones and deliverables are expected:

| <i>Name of the milestone</i> | <i>Deadline</i> |
|---|-----------------|
| M1 – Final local monitoring status evaluation | 31/10/2019 |

| <i>Name of the deliverable</i> | <i>Deadline</i> |
|---------------------------------------|-----------------|
| D1 – Mid-term local monitoring report | 31/07/2017 |
| D2 – Final local monitoring report | 30/11/2019 |

3. Progress

According with the project proposal, the indicators of progress for this action are:

- frequency of meetings and field visits with local stakeholders;
- % of scheduled deliverables and milestones;
- % incremented area with Sustainable Forest Management (SFM) in each study area;
- number of SFM indicators calculated in each study area.

Frequency of meetings and field visits with local stakeholders

Each university team, in coordination with AISF, was responsible for the supervision in the local sites of its competence. By frequently meetings and field visits with the local stakeholders, they maintained the project activities on track respecting deadlines and deliverables. The organization of meetings and field visits characterized all the project phases and activities starting from the existing data acquisition (Action B.1) to the Action B.5 regarding the up-scaling of the project results. With the new data acquisition completed (Action B.2), and the elaboration of the data (Action B.3), we had a new intense period of close collaboration with local stakeholders during the Action B.4 for everything related to the installation and testing of the Forest Information System (FIS).



Technical meeting with local stakeholders, coordinated by UNITUS on the 14th June 2018

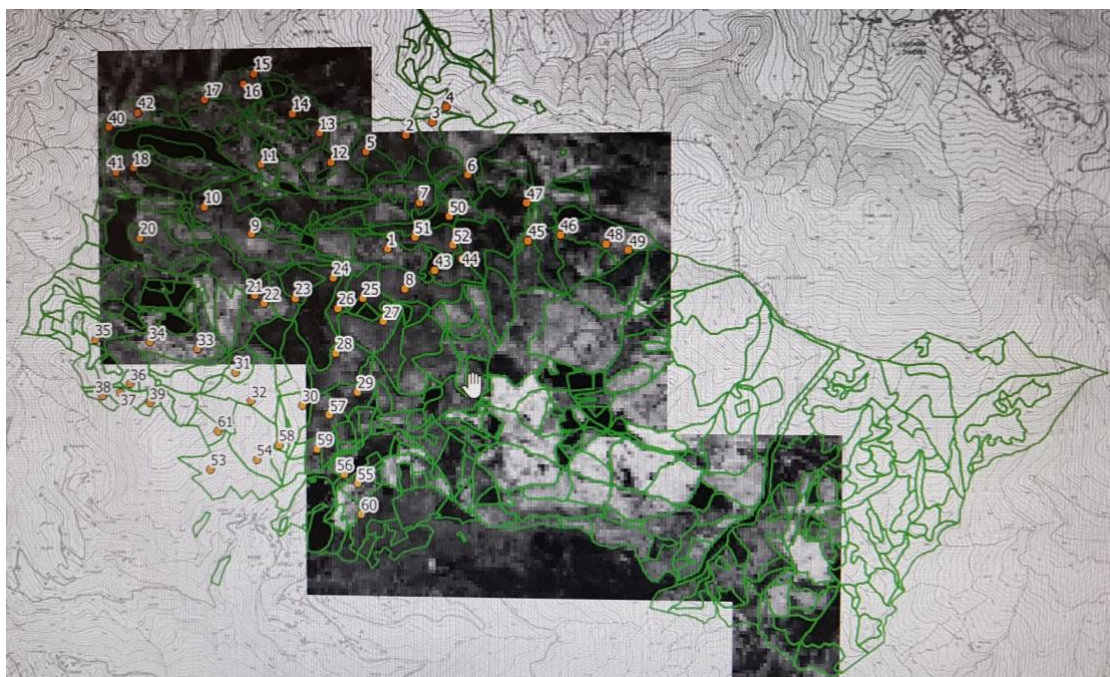
After making the FIS operational, the meetings continued to assist in its daily use in the offices of the local managers. Local partner and related universities collaborated in this direction also to lay the groundwork needed to define the project results up-scaling strategy. In addition to the interaction between the partners, local managers organized also meeting with other stakeholders external from the project to share results achieved and try to extend the knowledge around the possibilities offered by Sustainable Forest Management integration in their daily work.

% of scheduled deliverables and milestones

AISF is monitoring all the activities of the beneficiaries making sure that the responsible for the implementation of the actions are doing their work on schedule with the project's indication. Until now all the deliverables and milestones were reached in time with what is indicated in the project proposal.

% incremented area with Sustainable Forest Management (SFM) in each study area

With the conclusion of the Action B.4 and B.5 we started to evaluate the impacts of the project activities on the area managed with SFM. The monitoring of this indicator of progress will continue in the after LIFE period when the local managers will become more and more familiar with the FIS and can take advantage of its potential. Until now we can record an increase of SFM applications with the entire area of the demonstration sites covered by this kind of management and the possibility, see for example what happened in Rincine, to extend the application to other territories around the sites. Both Rincine than Bosco Pennataro will create the new forest management plan taking into account the results achieved by our project thus extending the area with SFM.



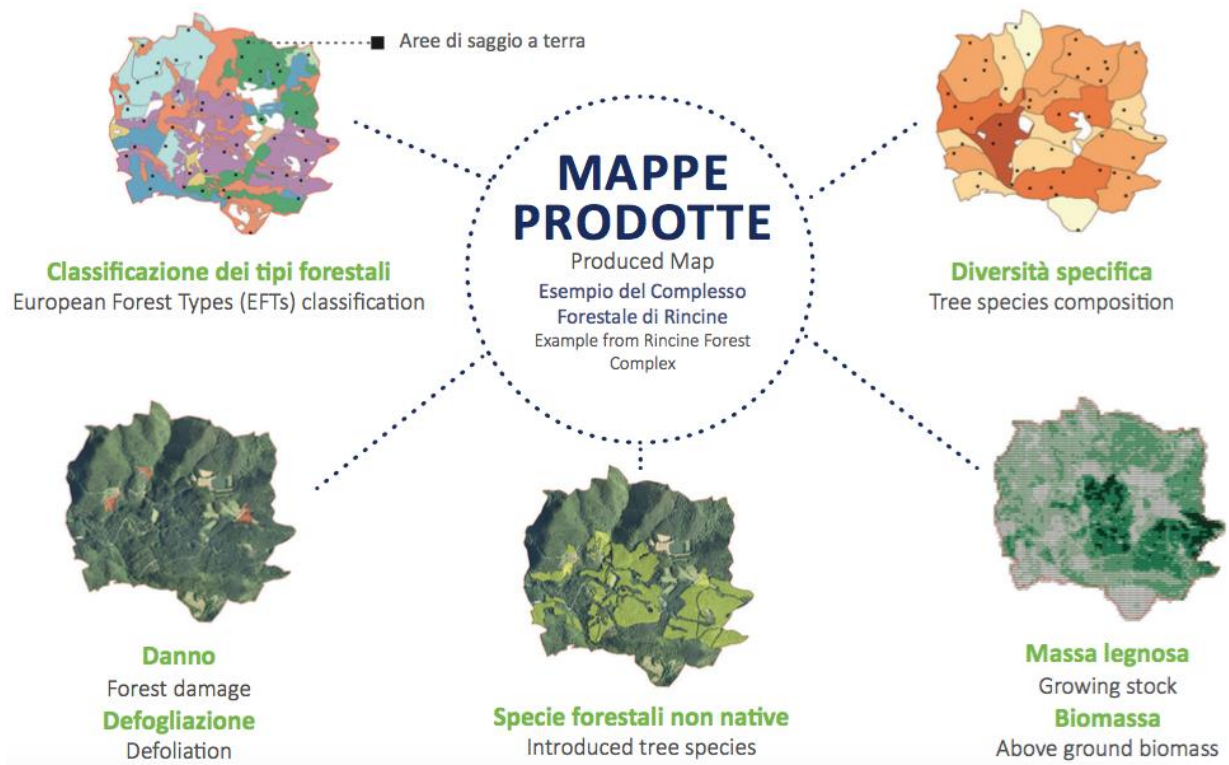
Example of field surveys extension out from the demonstration site in Rincine to cover the area of the new forest management plan

Number of SFM indicators calculated in each study area

With the conclusion of Action B.3 and B.4 all the SFM indicators proposed were mapped and uploaded in the FIS of each demonstration site.

| Demonstration site | growing stock (# 1.3) | ground biomass (# 1.4) | number of tree species (# 4.1) | area covered by introduced tree species (# 4.4) | defoliation (# 2.3) | forest damage (# 2.4) |
|--------------------|-----------------------|------------------------|--------------------------------|---|---------------------|-----------------------|
| Rincine | X | X | X | X | X | X |
| Caprarola | X | X | X | X | X | X |
| Bosco Pennataro | X | X | X | X | X | X |

Progress in the estimation of SFM indicators for each study area (X = done)



Example of the SFM indicators maps created for the demonstration site of Rincine